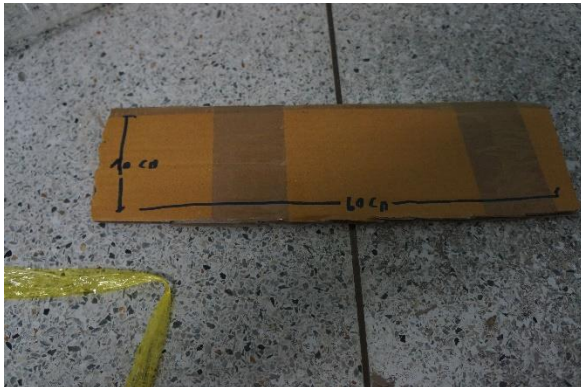


## How to install wood carving panel

### Instrument

- 1) Small cordless drill
  - 2) Small deck screw (height 0.8-1 cm)
  - 3) deck screw (3-4 cm)
  - 4) Screwdriver
  - 5) Hanging bracket
  - 6) Hammer
  - 7) Wall Plugs PVC
  - 8) plywood, Plywood or any wood
- 6 pcs of 10 x 60 cm and 2 pcs of 10 x 160 cm



Hanging bracket



Small deck screw (height 0.8-1 cm)



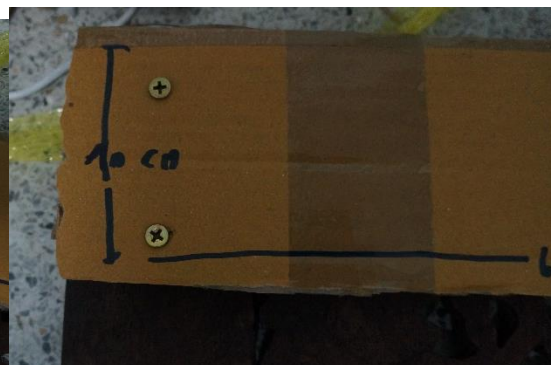
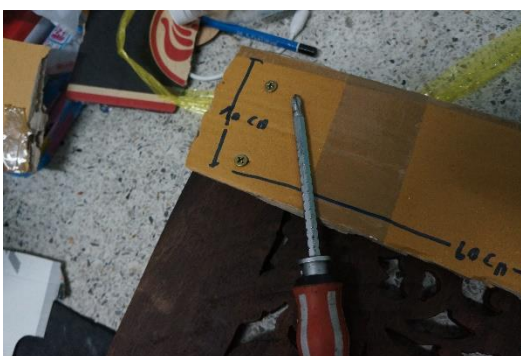
Wall Plugs PVC

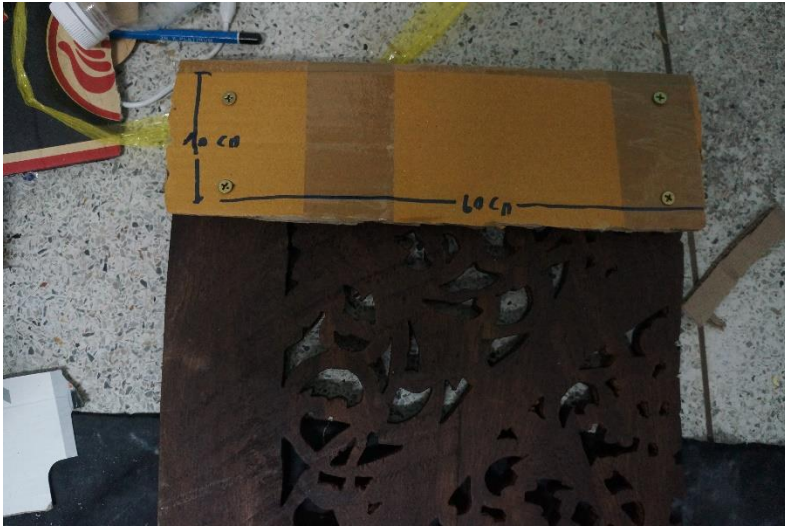
deck screw (3-4 cm)

- 1) The first step we have to do is to make back-wooden frame. We will use wood (10 x 60 cm) and wood (10 x 160 cm). We start with put wood (10 x 60 cm) on back side of panel like the photo.



The next step is to use screwdriver. Deck screws will be used to bind wood (10 x 60 cm) with panel. We screw 4 corners of wood (10 x 60 cm).





Do it repeatedly on the top and bottom.

We do like this on other two pieces. We will get this picture.

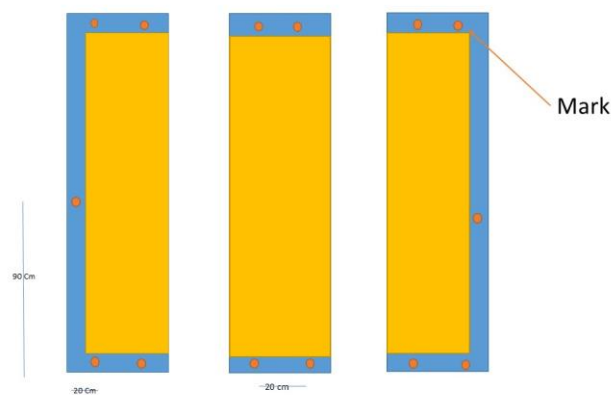


The next process is to use wood (10 x 160 cm). We use screw to bind 2 wood (10 x 160) on other two sides. We will get frame on the back of panel.



Now we have back-wooden frame. This frame can help you install it seamless. It is as if the panel had one piece. Moreover, this frame will be skeleton of the panel. It helps increase strength of panel. We are already to hang it.

- 2) The next step we have to do is to mark out.  
Panel consists of 3 pieces. We have to mark out at the center of the frame. We will mark out at the position for every size of panels (5 cm from the bottom edge of panel and 20 cm from each side). So, we will mark 2 points per one piece of panel. Moreover, we have to mark at the center of wood (10 x 160 cm). Mark will be like this photo.

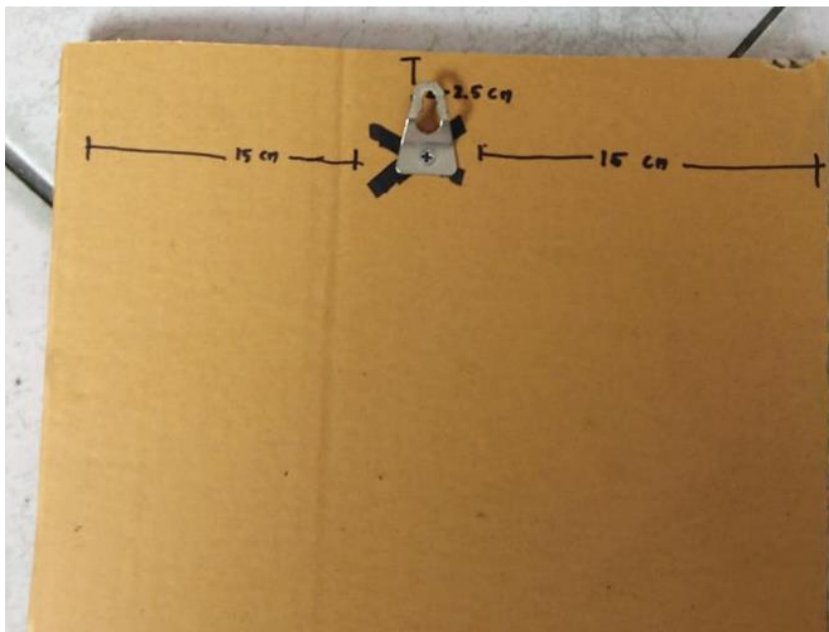


3) The next stage is to use Screwdriver.



Deck screw will be used to bind Hanging bracket with panel on the back-wooden frame.

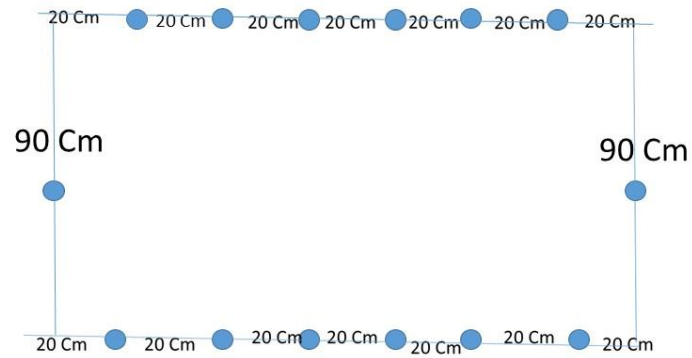
We will screw according to marks we made.



We will bind Hanging bracket with panel at every position we marked out (12 positions for 72 x 72 inches).

We have just finished panel preparation for hanging.

- 4) After panel is already for hanging, we have to prepare wall for hanging. We start preparing the wall by mark out the wall.



- 5) Drill your hole that you have marked out.



Then fit Wall Plugs PVC into the hole by using your hammer.





6) Use Screwdriver to put deck screw (3-4 cm) into Wall Plugs PVC.



7) The final stage is to hang the carving panel.

In addition to using the panel as wall décor in the living room, it can be used as a headboard. 60 x 60 and 70 x 70 panel can be used as a headboard (king bed size and queen bed size).

